



AMBOORINY BURRU FOUNDATION ANNUAL MEMBERS' REPORT 2016 / 2017

KRED IS OWNED BY TRADITIONAL OWNERS

**WE ARE CREATING INDEPENDENT ABORIGINAL
ECONOMIC DEVELOPMENT**

BY STANDING TOGETHER IN A CULTURAL BLOCK, WE ARE STRONG

NO DEVELOPMENT SHOULD HAPPEN ON OUR COUNTRY WITHOUT OUR CONSENT

OUR YOUNG PEOPLE ARE OUR GREATEST ASSET: WE SUPPORT THEM THROUGH SCHOLARSHIPS!

Welcome to our 2016 / 2017 Ambooriny Burru Foundation Members' Report. This report provides an update for our members on the Ambooriny Burru Foundation (which administers the Nipper Tabagee Scholarships) and on KRED Enterprises (which operates the wholly-owned subsidiary company Environmental Heritage and Social Impact Services [EHSIS]). KRED has also established a legal firm, Arma Legal, and the Kimberley Agriculture and Pastoral Company. This report has been written, compiled and designed by Madelaine Dickie from KRED Enterprises. Thank you to the Kimberley Land Council who have allowed us to use some of their photos in this report.





CONTENTS

Members' map: eight native title groups own the Ambooriny Burru Foundation 4.

Structure of KRED and the Ambooriny Burru Foundation 5.

The Ambooriny Burru Foundation Chairperson Report: Gordon Marshall 7.

Nipper Tabagee Scholarship Recipients 9.

KRED Enterprises Chairperson Report: Peter Murray 13.

KRED Enterprises CEO Report: Wayne Bergmann 15.

Arma Legal 16.

Environmental Heritage and Social Impact Services [EHSIS] 18.

Kimberley Agriculture and Pastoral Company [KAPCO] 20.

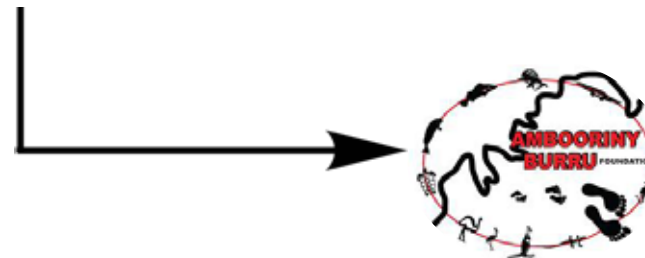
KRED's Member Services 22.



8 NATIVE TITLE GROUPS OWN KRED



Ambooriny Burru can appoint three independent directors from the Kimberley Land Council, Kimberley Language Resource Centre and Kimberley Aboriginal Law and Culture Centre.



The Ambooriny Burru Foundation owns KRED Enterprises. It's for the social benefit of all Kimberley people.



KRED Enterprises is a Broome-based charitable trust committed to independent Aboriginal economic development. We offer corporate governance advice, commercial advice, book-keeping and media services. KRED Enterprises has two wholly-owned subsidiary companies: Arma Legal and EHSIS.

arma legal

Arma Legal is an independent law firm with staff based in Sydney, Broome and Cairns.



EHSIS is a niche heritage and logistics business responsible for organising heritage surveys, cultural awareness training and cultural heritage monitors.



AMBOORINY BURRU FOUNDATION: ABOUT & GORDON MARSHALL'S CHAIRPERSON REPORT

The Ambooriny Burru Foundation was formed by our old people, the Kimberley elders, who wanted an organisation that would be owned and directed by Aboriginal people and would work exclusively in our interests. Our old people didn't come from a culture of 'take, take, take'. They knew it was important to share, which is why all members of the Ambooriny Burru Foundation contribute to a 'sharing bucket'. This is then used to assist Kimberley Traditional Owners in the form of Nipper Tabagee Scholarships and social assistance. The Ambooriny Burru Foundation is committed to guiding responsible economic development for the long term. We want our people to be able to walk in two worlds: as strong cultural leaders and participants in the modern economy.



The core function of the Ambooriny Burru Foundation has been to administer the Nipper Tabagee Scholarships, which are usually awarded to school-aged young people. Ambooriny Burru is able to assist with things like laptops, university fees—even trips overseas. We've just had an application from two students who have been chosen to play basketball in America. Our scholarships are about keeping kids at school and making sure kids have plenty of opportunities to excel at school. There's more about Nipper Tabagee and his legacy on the 'Scholarships' page of this report.

For anyone interested in applying for a scholarship, it's important to remember to fill in the whole application, including what your cultural block is. It also helps us if you put in who your family are—your parents and your grandparents. We give preference to scholarship applicants who are from one of the eight native title groups that own KRED.

The Ambooriny Burru Foundation is a great organisation, set up for the social benefit of our members. Our members OWN the Ambooriny Burru Foundation, and with a representative on the board from each member-group of KRED, it's Traditional Owners that set Ambooriny Burru's strategic direction. We always welcome new members, so if your native title group is looking for extra assistance when it comes to social support in the form of scholarships, or extra legal, accounting, administration or media services at an affordable members-only rate, then make sure you get in touch. By standing together under the one organisation, we are stronger than if we stand alone.



Raquell Bin Rashid (right) pictured here with his mum Rashidah Bin Rashid



Mark Riches (left) with members of The Struggling Kings

NIPPER TABAGEE SCHOLARSHIP RECIPIENTS

Raquell Bin Rashid has been chased by sharks while spear fishing. He's a record-breaking school athlete. He knows all the keyboard cheats. A Karajarri, Nimanburr, Bardi and Yawuru man, Raquell has received a scholarship to attend the prestigious Christ Church Grammar in Perth. It's a big move, Broome to Perth, but Raquell's keen for the experience. In an essay explaining why, he writes, "I am a positive young boy who likes to take on new challenges and give it my best shot. I am very passionate about my sports, especially basketball and football. I would like to be a leader and a good role model, especially for my people here in the Kimberley. I'm very keen to learn about other cultures and places. I want to learn to be independent from my family and to make them proud." It's no small thing, scoring a scholarship to Christ Church. The acceptance process is rigorous and nerve-

wracking, demanding interviews of both potential students and their parents. Still, the Grammar has a strong record of supporting other Aboriginal kids from Broome. "My cousin Brodie Albert, and my Uncle, Jerry Ansey, also went to Christ Church. They spoke really highly of the school," Raquell says. While he won't get to spear any Bluebone or Spanish Flag down in Perth, there will be plenty of study, footy, basketball, and maybe even a few trips to Timezone. "I want to follow my dreams to become an AFL player, or maybe a mechanic," Raquell says.

Meet **Mark Riches**, a basketball star, a rock star, and also one of our Nipper Tabagee Scholarship recipients. Mark's the keyboard player in The Struggling Kings, an alternative rock band originally started by his brothers. "My brothers have been making music for

a few years now and they've always tried to get me involved. At first I played guitar, but I gave up, I never really had the desire," Mark says. Then he discovered the keyboard. The keyboard's an instrument he does feel passionate about. "I definitely prefer it to any other instrument. I really wanted to work on my skills, so I've been doing a Certificate II in Music through the Abmusic Aboriginal Corporation in Perth." Mark used a Nipper Tabagee Scholarship to set himself up with a new keyboard, an amp and a keyboard stand, which has helped him with his studies. It's also meant he's now fully equipped to tour. In September this year, The Struggling Kings played gigs at Derby, Cape Leveque, One Arm Point and Cygnet Bay. "It was my first proper experience of playing music in front of a crowd. I had about six weeks to learn 20 songs. And it was awesome, the first gig in Derby was really rowdy!" Mark says.



NIPPER TABAGEE SCHOLARSHIP RECIPIENTS [CONT ...]

Mark Riches [cont ...] A Karajarri and Bardi Jawi man, Mark has lived in One Arm Point, Perth, Melbourne and New York. He won a scholarship to play college basketball in the US, which resulted in a fast-paced few years, travelling to Pennsylvania and North Carolina in addition to the games in New York. He broke freshman records in his first year at college; he was a leading player in scoring and steals. These days, he's based back in Perth. "I miss basketball a lot. I play in the WA State League but I do miss playing in America. It's not quite the same. That said, basketball has taught me what commitment really means. And for now, I've switched my focus to music. While it might be a struggle at times, I've been working hard at getting better."

We also supported a number of local girls with the registration fees so that they could attend the Budgies **Australian** Indigenous

Schoolgirls Netball Carnival in Sydney in January, representing Top End Indigenous All Stars. From this comp, two exceptionally talented players, Angelica D'Anna and Brittany Pitt, were chosen for the Budgies Indigenous Australian Netball Squad. Angelica played in the Budgies Under 13s at the World Schoolgirls Netball Carnival on the Gold Coast in July and the team came runner up in their division. Brittany played for the Budgies 18s at the International Secondary Schoolgirls Association netball carnival in Fiji in May.

We have also supported local legends 'The Diamonds' with a Nipper Tabagee Scholarship. 'The Diamonds' are a netball team of Kimberley girls with big aspirations to play interstate and even internationally. They were the 2017 14U Premiers of the Broome Netball Association. The picture opposite was taken just after their 14U semi-final win in Broome.

Our scholarships are named after Nipper Tabagee, or Malaga, who was a brave, intelligent, and highly respected senior Kimberley man. Nipper Tabagee brought Kimberley Aboriginal people together by encouraging us to find common ground so we could achieve justice on land rights issues. This year, in his honour, there have been a number of successful scholarship recipients. This is part of Ambooriny Burru's mission to share and to give back to the wider Kimberley Aboriginal community. We come from a cultural of sharing and of lifting each other up, and this is what we're hoping to continue through our scholarships. There are a number of different rounds each year, so if you are interested and think you might be eligible, please check out our website: www.kred.org.au.



The Diamonds after their 14U semi-final win in Broome



KRED ENTERPRISES: PETER MURRAY'S CHAIRPERSON REPORT



Things have been quiet over the last twelve months, but we've been slowly and steadily growing the business potential for the Kimberley Agriculture and Pastoral Company (KAPCO). It's exciting times—we're at a stage where Yanunijarra Aboriginal Corporation is looking to be part of KAPCO, and where there is also significant interest from potential investors. KAPCO is an important project because it's owned by Traditional Owners, it's creating jobs on country, it isn't reliant on government funding, and it's providing an opportunity for Bohemia Downs, Mt Anderson and Frazier Downs to generate income for their respective PBCs that's not reliant on income from the mining industry. All of this makes the KAPCO project quite unique in the Kimberley.

KRED's work more broadly continues to follow the vision of our old people, that is: to create independent Aboriginal economic development. KRED is owned by eight Traditional Owner groups across the Kimberley, and rather than driving its own agenda, it works to support these member groups to grow business development opportunities as the Traditional Owners direct. If KRED is to do its job properly, it requires trust from our members, a will to stick together, to stand strong, and not to lose sight of where we're going. When it comes to activities on our country that we're not happy about, 'no means no', and we want to keep it that way.

Next year, it's my hope that we can bring in more cultural advisers and Traditional Owners to become involved in decision-making processes. I'd also like to see a shift in focus to our young people. When it comes to post-school options, our youth should be encouraged to dream big, to consider exciting and challenging career pathways—nationally, and even internationally. It's about encouraging that spark. I think there should also be more support around youth leadership programs.

Overall, I'm hopeful that our activities will gain momentum, and that we'll be able to keep everyone in the circle—appreciating and understanding what an incredible job KRED and its team does. I'm proud of KRED's work, and I'm proud to be part of the journey.



KRED ENTERPRISES: WAYNE BERGMANN'S CHIEF EXECUTIVE OFFICER REPORT:

One of the biggest challenges facing Indigenous people and KRED's members, is keeping companies that wish to operate on our land accountable. We believe there should be no development on our traditional lands, without having free, prior and informed consent on every project. There should also be no development on our lands until companies earn their social licence to operate. A social license isn't a report extolling Indigenous engagement on a company's website, or in a glossy magazine. A social license to operate means concrete outcomes for Traditional Owners—outcomes that assist our members and native title groups to build their nations, and build prosperous futures for their families and children. All development on our traditional lands needs to align with our triple bottom line of people and culture, the environment and wealth. For our people, 'wealth' means a fair share of the income generated from our lands. Companies that do not operate on this basis, should not be supported legally, politically or financially.



The advantage of working with KRED is that we have the benefit of seventeen years of experience making strong agreements in the Kimberley, and allowing Aboriginal people to establish benchmarks that ensure the things that are important to them are protected. We need to stick together so that what we receive from companies is fair and reasonable.

It should be noted, that stability for companies comes from having certainty. Certainty is when we can clearly predict project outcomes. Certainty drives long-term confidence and investments. Certainty in projects comes from good engagement with Traditional Owners. Engaging proactively and in good faith with Traditional Owners, can add value to projects. In an increasing global community, industry and governments are being held accountable, and need to have a positive image in order to thrive.

In other projects, it has been a particularly exciting twelve months for the development of the Kimberley Agriculture and Pastoral Company (KAPCO). KRED has played a major role in assisting KAPCO to seek further investment, and in the coming months, we expect to see some significant opportunities arise for our members. This year has also seen the launch of our legal firm 'Arma Legal', formerly KRED Legal. Arma Legal works with clients across Australia and focuses on native title, commercial, corporate and personal property law. We have staff based in Cairns, Sydney and Broome, and our highly-skilled team ensure all Arma Legal's clients get the attention they deserve.

In closing, I would like to thank the board and KRED's Chairperson. Without their support we would not be able to achieve what we have. I would also like to thank my staff, for their long hours, hard work, and commitment to our vision to create independent Aboriginal economic development.





KRED Enterprises is operating a new legal firm called 'Arma Legal'. Formerly KRED Legal, the new name reflects our growing client base outside the Kimberley. What makes Arma Legal different to many other law firms, is that it's been set up by Traditional Owners, to meet the needs of Traditional Owners. Our lawyers understand the pressures of development on country and culture, the wish to protect cultural and environmental heritage, and the struggle to have native title recognised as a property right.

We have an experienced team, which we've been growing steadily. Our Indigenous and non-Indigenous staff are now based in a number of locations around Australia, including Broome, Cairns and Sydney. We focus on native title, corporate, commercial and personal property law; assist Indigenous

businesses and Prescribed Body Corporates with governance services; and we're working in a relatively uncharted area of law on a native title compensation claim.

We consider the native title agreements the Arma Legal team has negotiated between Traditional Owners and resource companies to be some of the strongest in Australia. The financial compensation is high and there are strong provisions for the protection of the environment and cultural heritage.

Over the last 12 months, Arma Legal has been working on identifying a land tenure model and framework to support home ownership and commercial opportunities for Kimberley Aboriginal people—a model that would provide secure, long-term, and tradeable tenure, without extinguishing native

title rights and interests. We've developed two possible options: an ILUA Model, which would not require legislative reform, and a Legislation Model, which would permit precise replication of the Northern Territory's township leasing model. Our consultations with native title holders during this project revealed a strong desire to use native title lands to generate income and provide for home ownership, provided native title rights and interests are not extinguished. It is also clear from these consultations that certainty is key for the financial sector. In our view, this certainty will be achieved entirely by implementation of the Legislative Model and satisfied to a great extent by the ILUA Model.

We also act for the Mt Jowlaenga #2 native title claim group in Federal Court proceedings against mineral sands miner Sheffield

Resources Ltd and the State of Western Australia. The matter, which relates to the application of the good faith requirement under the Native Title Act 1993 (Cth), is due to go before the full Federal Court in late 2017 or early 2018.

In addition to this work, we're negotiating native title agreements, heritage protection agreements, and offering representation on compulsory acquisition.

Our Arma Legal team is looking forward to an exciting and challenging year ahead, and will continue to balance work for our members with work for clients all over Australia. You can get in touch through our website: www.armalegal.com.au.



ENVIRONMENTAL HERITAGE AND SOCIAL IMPACT SERVICES [EHSIS]

KRED Enterprises operates a wholly-owned subsidiary company called Environmental Heritage and Social Impact Services (EHSIS). EHSIS is a niche heritage and logistics company specialising in environmental and heritage surveys, cultural awareness training and cultural heritage monitoring. EHSIS acts only on the instructions of Traditional Owners and always seeks the correct permissions from Traditional Owners before undertaking any work. All of our work is about ensuring that our cultural heritage and the environment are not destroyed by activities on country. We offer a professional service. We are good at what we do. We get it right the first time. In the last reporting period, we organised logistics for surveys between various stakeholders and Balangarra Aboriginal Corporation, the Jaru native title claim group, Karajarri Traditional Lands Association and Walalakoo Aboriginal Corporation.

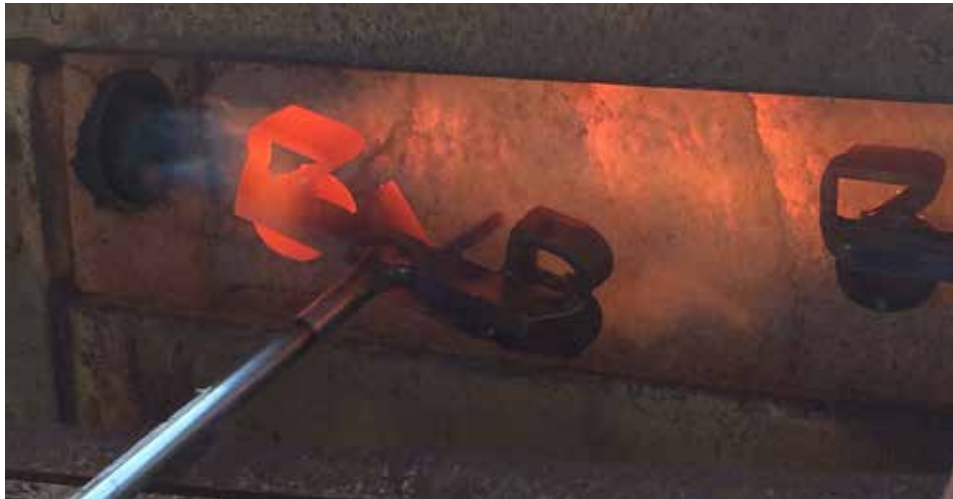






The Kimberley Agriculture and Pastoral Company was established in 2015 by KRED Enterprises as a fully Indigenous-owned pastoral venture. KAPCO is not owned by KRED Enterprises, but it is one of our key projects. It currently comprises of three Indigenous-owned pastoral stations, Mt Anderson, Frazier Downs and Bohemia Downs, and is soon set to grow bigger, with the Indigenous Land Corporation in the process of divesting Myroodah and Lulugui to KAPCO. By standing together, under a single management structure, all stations are able to take advantage of the economies of scale offered from an integrated pastoral enterprise. KAPCO is already delivering results. Over the last sixteen months a pool of 42 casual staff have worked across all three stations. In addition to generating jobs and training, we're also exploring ways that one of the KAPCO stations could be used as a site to develop a Kimberley youth diversionary and preventative program. Its working title is 'The Marlamanu Project', and it will provide an alternative to current mainstream youth justice programs. KRED has also been investigating opportunities for further investment in the company.





KRED'S MEMBER SERVICES FOR PRESCRIBED BODY CORPORATES: LEGAL, BOOK-KEEPING, MEDIA

Members of KRED benefit through access to legal, book-keeping and media services at special members-only rates. These services are important for PBCs that are ready to take that next step in development. We can assist with book-keeping services, as well as the preparation of monthly and quarterly financial reports, annual or interim auditing, preparation of annual financial statements to address ASIC or ORIC reporting requirements or for provision to other stakeholders. We offer executive finance services, special investigations and reviews, strategy advice, business planning and feasibility studies. Our directors have significant commercial and professional services experience, gained working in metropolitan and remote areas of Australia, as well as internationally. We assist both the Indigenous and non-Indigenous sectors to engage in culturally and commercially appropriate stakeholder consultation, with a view to obtaining the support of both project proponents and beneficiaries.

KRED Enterprises has also established Arma Legal, formerly KRED Legal. Our lawyers have extensive experience working in the fields of native title, commercial, corporate, and personal property law.

Finally, we offer media assistance of all kinds. We can prepare business cards, high-level media strategies, social media pages and press releases. We can write speeches, or, if you need, we can even get your website up and running. This year, we have assisted Yanunijarra Aboriginal Corporation, Walalakoo Aboriginal Corporation and Karajarri Traditional Lands Association with their media needs. This has involved liaising with local, state and national media (and project partners) to cover important events, web development and design, the design of business cards, Facebook pages, and annual members' reports. Please get in touch if you're interested in this kind of support for your Prescribed Body Corporate or business.





Our Nanyin
Plant and Animal
Books are available
through our online
shop on the KTLA
website

Annual Members' Report 2017



HEALTHY COUNTRY PLAN



In May 2017 the Walalakoo Healthy Country Plan (HCP) was publicly launched in Jarimadangah. The Jarimadangah community, Nykina Mangala Rangers and Walalakoo Aboriginal Corporation invited community members, friends and partners to spend a day on-country to learn about Nykina and Mangala's aspirations for Healthy Country Management, explore Nykina and Mangala's people rich culture, and learn about the life of a Nykina Mangala Ranger.

The Walalakoo HCP gives guidance to the Nykina Mangala Rangers and Walalakoo Aboriginal Corporation about cultural and natural land-management priorities and will inform land-management decisions. The Healthy Country Plan tells the story of how Nykina and Mangala Traditional Owners want to look after country.

For a copy of the Walalakoo Healthy Country Plan please visit www.walalakoo.org.au or contact your corporation staff. The Nature Conservancy and the Western Australian Government's State NRM Program supported the development and launch of the Walalakoo Healthy Country Plan.

www.walalakoo.org.au

Have you seen the annual members' reports for Yanunijarra Aboriginal Corporation, Karajarri Traditional Lands Association (KTLA) and Walalakoo Aboriginal Corporation? These were created with the assistance of KRED. We also run the Facebook pages and websites for some of our members to promote their work and on-country activities. If you are interested in this kind of support for your PBC, we would love to hear from you: (08) 91 92 8782.

Ambooriny Burru Group

PO BOX 3397

Broome, WA, Australia 6725

(+61) 08 91 928782

Fax: 08 91 928916

www.kred.org.au

@KREDEnterprises

www.facebook.com/KREDEnterprises

www.instagram.com/KREDEnterprises

au.linkedin.com/company/kred-enterprises

